



Every8.Cloud

Data Analytics Connectors

DECEMBER 2024



At **Every8.Cloud**, we're dedicated to what matters most: delivering real value to our customers. With a relentless focus on top performance, high availability, and rock-solid security, we make sure our clients experience cloud services that are dependable, powerful, and always there when you need them.

Every business has unique requirements for data analysis and presentation. The **Every8.Cloud platform** is designed with flexibility in mind, offering a suite of out-of-the-box features to ensure your data is exactly where you need it. This document highlights the core features of the **Every8.Cloud Data Analytics Connectors** and how they can empower your business.

WHY MIGHT YOU NEED THIS?

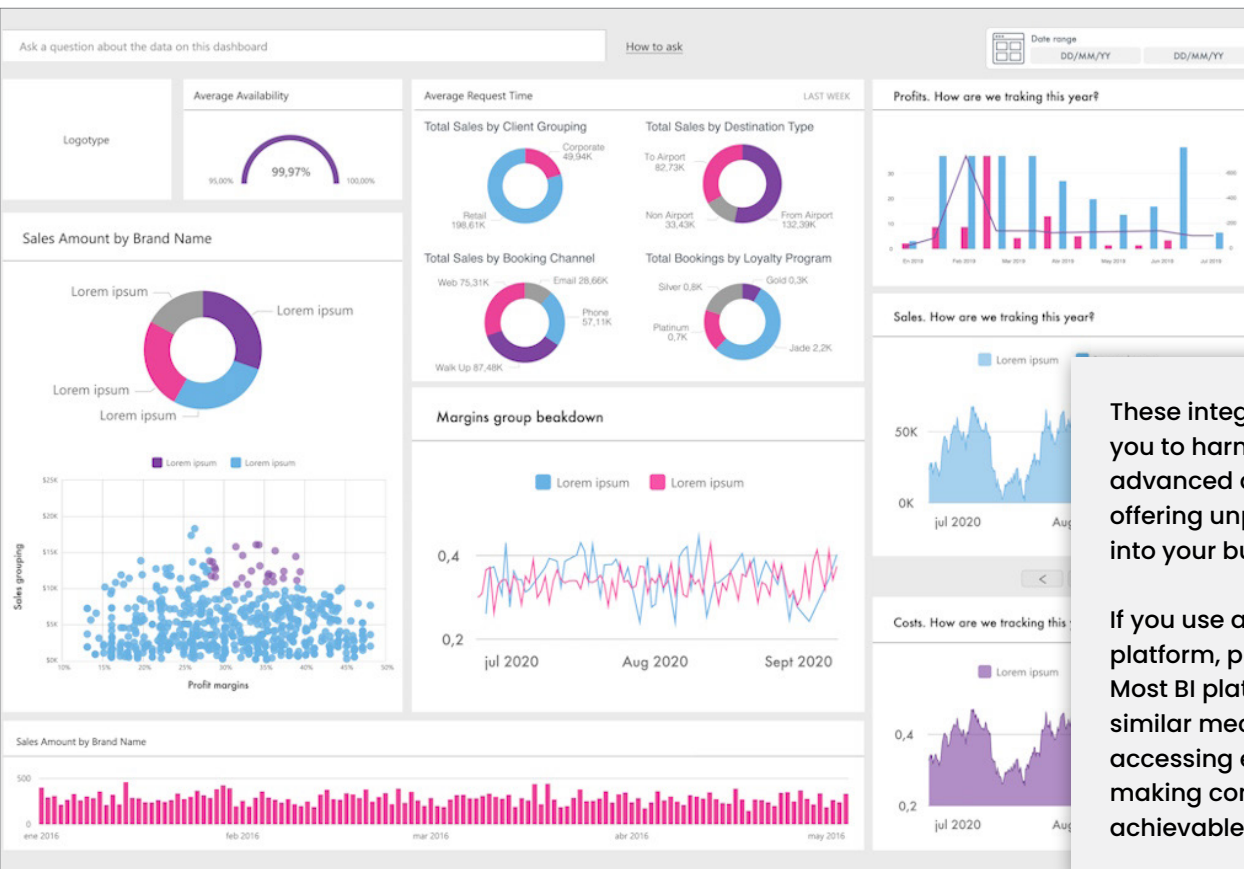
We take the phrase “Your data – your choice” seriously. Whether it's analyzing, visualizing, or sharing your data, **Every8.Cloud** provides versatile options to connect and integrate with external systems seamlessly. Here are the tools available on the **Every8.Cloud Platform** for data exchange:

- API for robust and flexible integrations
- Integrated Grid Export to extract data from tables effortlessly.
- Integrated Report Export for generating and sharing customized reports.
- External Actions for triggering processes in other systems.
- Triggers for automating workflows and processes.

- Embedded Forms for collecting and integrating user inputs.
- Scheduled Jobs for automating data updates and processes on a defined timeline.
- Data Analytics Connectors for powerful BI integrations.

The **Every8.Cloud Data Analytics Connectors** support the following popular business intelligence platforms:

- **Power BI**
- **Tableau**
- **Qlik**
- **Apache Superset**



These integrations enable you to harness the power of advanced analytics tools, offering unparalleled insights into your business data.

If you use a different BI platform, please let us know. Most BI platforms operate on similar mechanisms for accessing external data, making compatibility highly achievable.

DELIVERY

Any report in any application developed on the Every8.Cloud Platform can serve as a data source for subsequent analysis using Data Analytics Connectors.

Activating a Data Analytics Connector is a logical next step for integrating your reports with external BI platforms. Additionally, these connectors can be used to integrate with other types of platforms that support this type of integration.

For specific options and examples, please feel free to inquire.

PRICING

The Data Analytics Connectors are completely free and available in all reports. You can develop a new report using the report builder and obtain a link to use with your external BI platform. You can also use any existing report that you want to visualize or analyze in a different way. Your BI system can also synchronize or update the data using the same link on a regular basis to ensure that your analytics model is always up to date.

If you need assistance with report development, please feel free to inquire.



**You think BIG,
we scale BIGGER!**

The Every8.Cloud platform ensures your data works for you, providing the tools you need to transform raw information into actionable insights. Reach out to learn more about how we can integrate with your existing systems and elevate your data analytics capabilities.

Unlock the full potential of your data!

Get in touch today to explore how Every8.Cloud On-Premises Edition will transform your operations.

T: (416) 206-4149

E: info@every8.cloud

Eugene Konstantynov



every8.cloud

